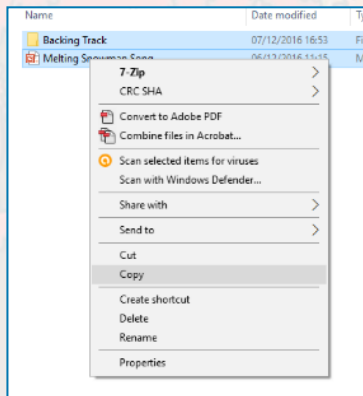
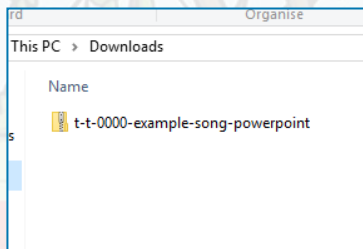
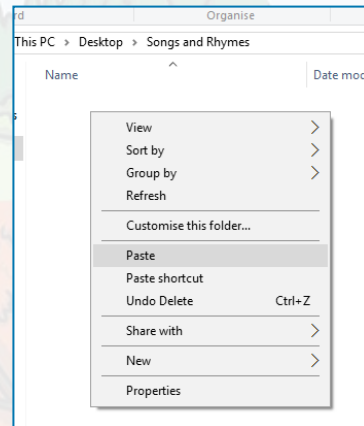


# Guidance for Video/Audio in PowerPoints

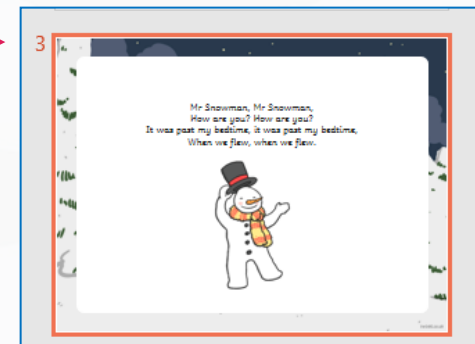
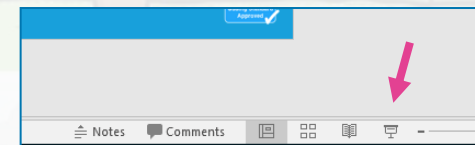
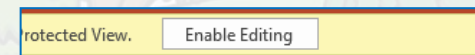
1. Open the folder and copy all the files.



2. Paste the copied files into a new folder.



3. Open the PowerPoint file, enable editing and enter presentation mode (start the slide show).



Please note the embedded audio may not be compatible with early versions of PowerPoint.

You may wish to delete this slide before beginning the presentation.



# Seasons

twinkl

Click on a tree to watch a video



spring



summer



autumn



winter

Next slide



# What is your favourite season?

Click on a tree below.

spring

summer

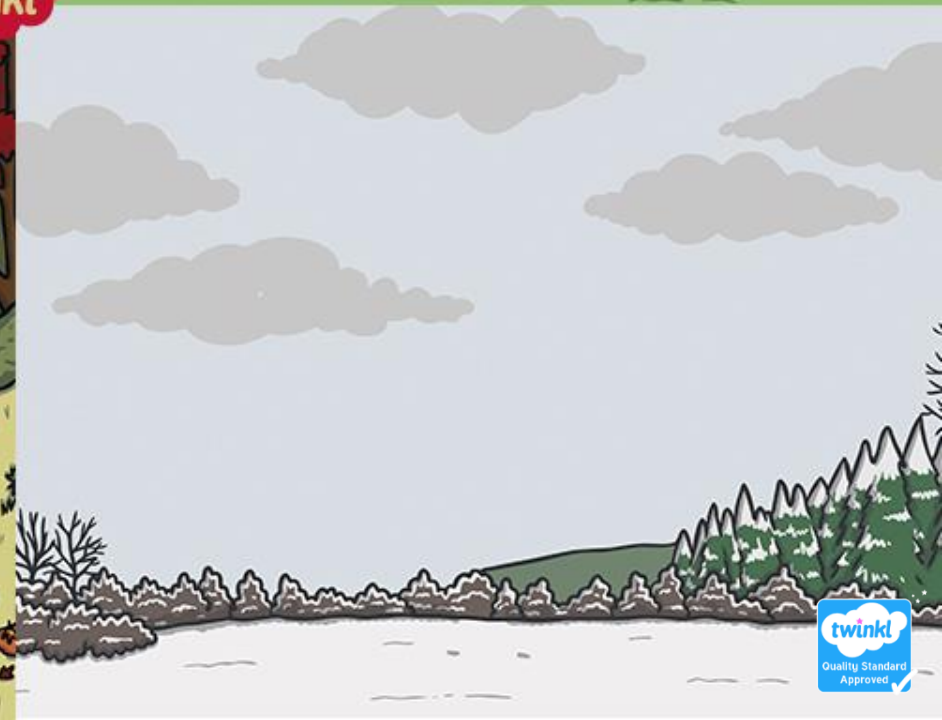
autumn

winter





twinkl



twinkl  
Quality Standard  
Approved